



Release Notes

Product Release Information

Product: 24online

Release Number: 7.1.1 Build 0

Compatible versions: 7.1.0.3 and 7.1.0.4

Release Date: 20th March, 2006

Customer Support: For more information or support, please visit our [website](#) or email at support@24onlinebilling.com

Introduction

This document contains the release notes for 24online version 7.1.1 build 0 and covers new features and other significant enhancements done in the product. The following sections describe the release in detail and provide other information that supplements the main documentation.

24online 7.1.1 build 0 is a stability and security update that is part of our ongoing program to provide a safe Internet experience for our customers. We recommend that all users upgrade to this latest version.

New Features

1. Package-pool association for assigning packages based on the pool characteristics

With this feature now you can also create package for public & private IP addresses and network instead of policies.

This feature is beneficial when prime or high end packages are to be assigned to the public IP address pool or when 24online is not leasing IP address to the users.

2. Time based billing for Postpaid package subscribers

Now 24online provides the invoicing option for the postpaid package users using surfing quota policy. Surfing quota policy provides flexibility of defining rate scheme based policy or flat/fixed rate policy.

Defining rate based surfing quota policy allows defining different limit for different users.

3. Customized HTTP log on and log off page

24online provides flexibility to customize the log on and log off page to offer consistent logon/log off page. This page can be exclusive to your business including your business name and logo and only your subscribers can use this page to log on and log off. You can even create a dedicated page for a specific user.

4. Multiple language support for the HTTP log on and log off page

5. Dynamic DNS service support

Dynamic DNS (Domain Name Service) is a method of keeping a static domain/host name linked to a dynamically assigned public IP address allowing your server to be more easily accessible from various locations on the Internet.

Powered by Dynamic Domain Name System (DDNS), you can now access your 24online server by the domain name, instead of dynamically assigned IP address. DDNS will tie a domain name (e.g. my24online.com, or elitecore.24online.com) to your dynamic IP address.

This feature is highly beneficial for Cable and DSL connections where the public IP address of 24online is not static.

6. 'Purge Invoice' option added in Invoice Management, for purging of invoices generated for deleted and deactivated users

7. 'Deactivate Package' option of added in Package Management for saving the package that is currently not in use. To re-use the package, simply activate the package by changing its status.

8. Generation of Web Surfing reports for users accessing through NAS when Cache server is ON

9. Documentation

This update enhances 24online by adding Context sensitive help along with the printable documentation in the PDF form.

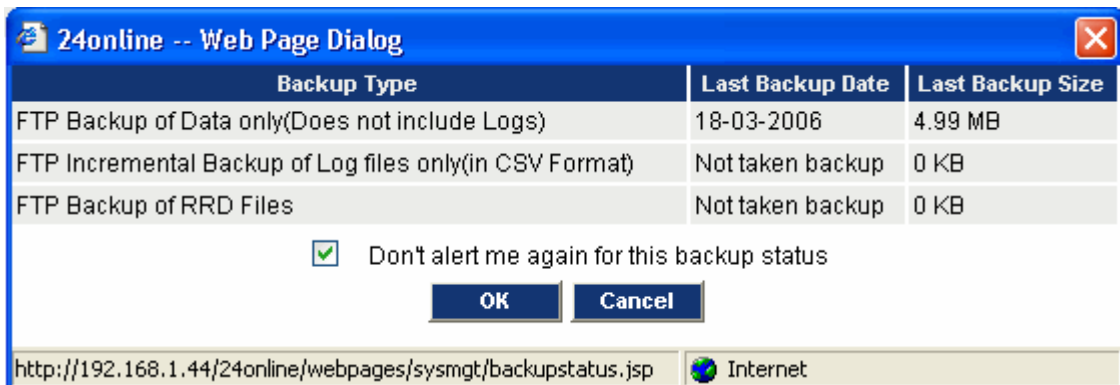
Context Sensitive help

Developed Online help which is stored in the Help directory. It can be accessed directly from the 24online GUI by pressing F1 or clicking Help button displayed in the top right corner of all the screens.

Online help includes help for all the add-on modules also.

Enhancements

1. To avoid unauthorized users logging in and using the user account, 24online provides an option to change/reset the default password when the user logs on for the first time using HTTP client.
2. Information on the new features added will be displayed when administrator logs on to the Web Console.
3. Pop-up message will be displayed informing the backup status when administrator logs on to the Web Console.



4. Delete user irrespective of user status directly from the Search User page instead of Manage Active and Manage Deactive page
5. Schedule automatic mailing notification for informing product and module expiry status to the specified Email Addresses
6. Now apart from package price and service tax, any other miscellaneous expenses can also be included in the Invoice
7. Now it is possible to generate Zone wise Internet usage reports. These reports help in analyzing zone wise bandwidth usage and determine the peak hour of each zone.

How to Report Problems

If you have problems with your system, contact customer support using one of the following methods:

- Email id: support@24onlinebilling.com
- Telephone number : 91-79-26400707

Please have the following information available prior to contacting support. This helps to ensure that our support staff can best assist you in resolving problems:

- Description of the problem, including the situation where the problem occurs and its impact on your operation
- Product version, including any patches and other software that might be affecting the problem
- Detailed steps on the methods you have used to reproduce the problem
- Any error logs or dumps

IMPORTANT NOTICE

Elitecore has supplied this Information believing it to be accurate and reliable at the time of printing, but is presented without warranty of any kind, expressed or implied. Users must take full responsibility for their application of any products. Elitecore assumes no responsibility for any errors that may appear in this document. Elitecore reserves the right, without notice to make changes in product design or specifications. Information is subject to change without notice.

SOFTWARE LICENSE

The software described in this document is furnished under the terms of Elitecore's software license agreement. Please read these terms and conditions carefully before using the software. By using this software, you agree to be bound by the terms and conditions of this license. If you do not agree with the terms of this license, promptly return the unused software and manual (with proof of payment) to the place of purchase for a full refund.

LIMITED WARRANTY

Software: Elitecore warrants for a period of ninety (90) days from the date of shipment from Elitecore: (1) the media on which the Software is furnished will be free of defects in materials and workmanship under normal use; and (2) the Software substantially conforms to its published specifications except for the foregoing, the software is provided AS IS. This limited warranty extends only to the customer as the original licenses. Customers exclusive remedy and the entire liability of Elitecore and its suppliers under this warranty will be, at Elitecore or its service center's option, repair, replacement, or refund of the software if reported (or, upon, request, returned) to the party supplying the software to the customer. In no event does Elitecore warrant that the Software is error free, or that the customer will be able to operate the software without problems or interruptions.

DISCLAIMER OF WARRANTY

Except as specified in this warranty, all expressed or implied conditions, representations, and warranties including, without limitation, any implied warranty or merchantability, fitness for a particular purpose, non-infringement or arising from a course of dealing, usage, or trade practice, and hereby excluded to the extent allowed by applicable law.

In no event will Elitecore or its supplier be liable for any lost revenue, profit, or data, or for special, indirect, consequential, incidental, or punitive damages however caused and regardless of the theory of liability arising out of the use of or inability to use the product even if Elitecore or its suppliers have been advised of the possibility of such damages. In the event shall Elitecore's or its supplier's liability to the customer, whether in contract, tort (including negligence) or otherwise, exceed the price paid by the customer. The foregoing limitations shall apply even if the above stated warranty fails of its essential purpose.

In no event shall Elitecore or its supplier be liable for any indirect, special, consequential, or incidental damages, including, without limitation, lost profits or loss or damage to data arising out of the use or inability to use this manual, even if Elitecore or its suppliers have been advised of the possibility of such damages.

RESTRICTED RIGHTS

Copyright 2000 Elitecore Technologies Ltd. All rights reserved. 24online-Internet on Cable, 24online-Internet on Cable logo are trademark of Elitecore Technologies Ltd. Information supplies by Elitecore Technologies Ltd. Is believed to be accurate and reliable at the time of printing, but Elitecore Technologies assumes no responsibility for any errors that may appear in this documents. Elitecore Technologies reserves the right, without notice, to make changes in product design or specifications. Information is subject to change without notice

Corporate Headquarters

Elitecore Technologies Ltd.
904 Silicon Tower,
Off. C.G. Road,
Ahmedabad – 380015, INDIA
www.24onlinebilling.com

Elitecore Technologies Ltd.**Corporate Office**

904 Silicon Tower,
B/h Pariseema Building,
Off. C.G. Road,
Ahmedabad-380 006.
INDIA
Telephone: +91-79-26405600
Fax: +91-79-26407640

Bangalore Office

3rd floor, 19/1 Infantry Road Cross
Behind Medinova Diagnostic Centre
Bangalore-560 001.
INDIA
Telephone: +91-80-41517880/81
Fax: +91-80-41517883

Delhi Office

606 Mahatta Tower,
'B' Block Community Centre,
Janakpuri,
New Delhi-110058.
INDIA
Telephone: +91-11-41589761/62
Fax: +91-11-41589760

Mumbai Office

Office 4, B/65, Stanford Plaza,
Off. New Link Road,
Andheri (W)
Mumbai-400 058.
INDIA
Telephone: +91-22-56951280/380
Fax: +91-22-56923363

U.S.A Office

600 Meadowland Parkway, Suite 270,
Secaucus,
New Jersey 07094
U.S.A.
Telephone: 201-484-7581
Fax: 201-777-2113

Australia Office

Unit 33/1 Talavera Road,
Macquarie Business Park
North Ryde NSW 2113
Australia
Telephone: 61-298897368
Fax: 61-298897369